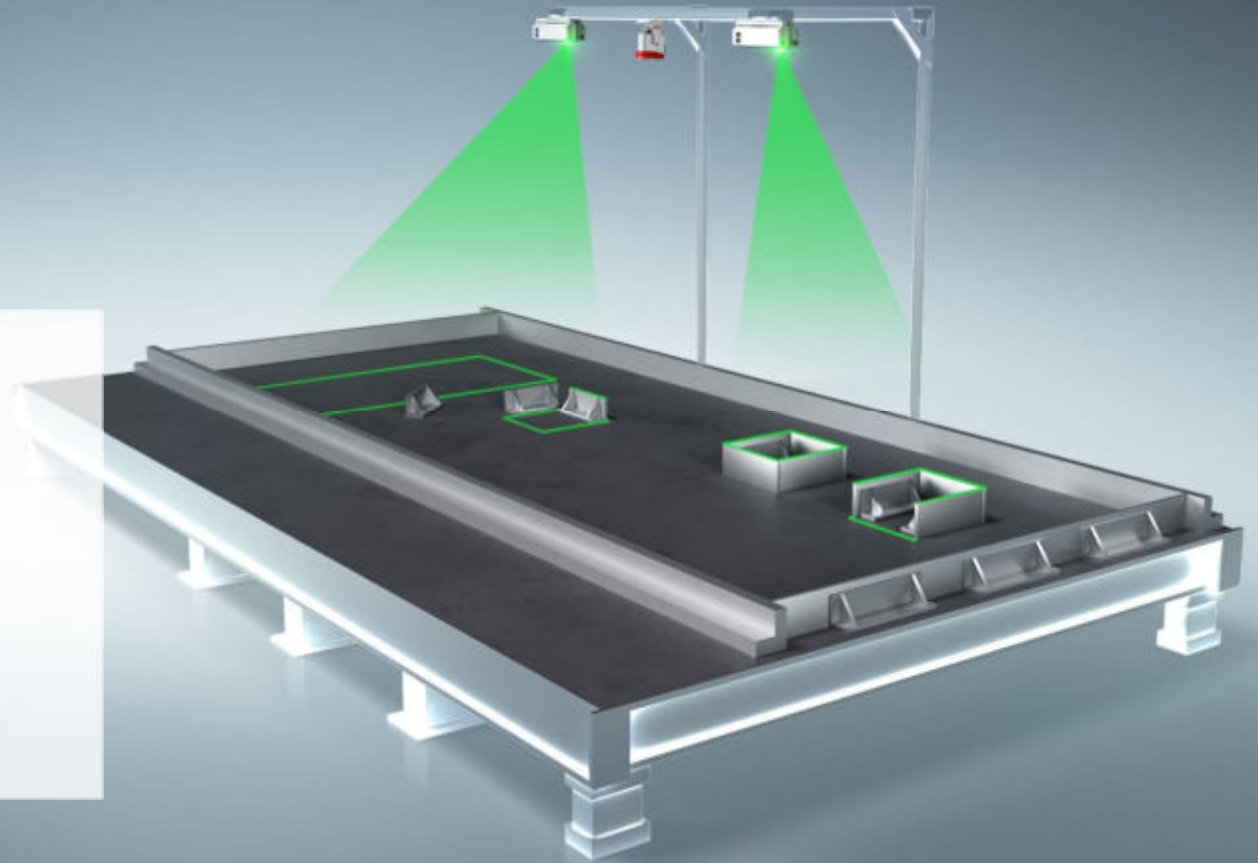




Boost quality and reduce cost: Benefits and new options of laser projection systems

Max Mandt-Merck / 28.09.2023

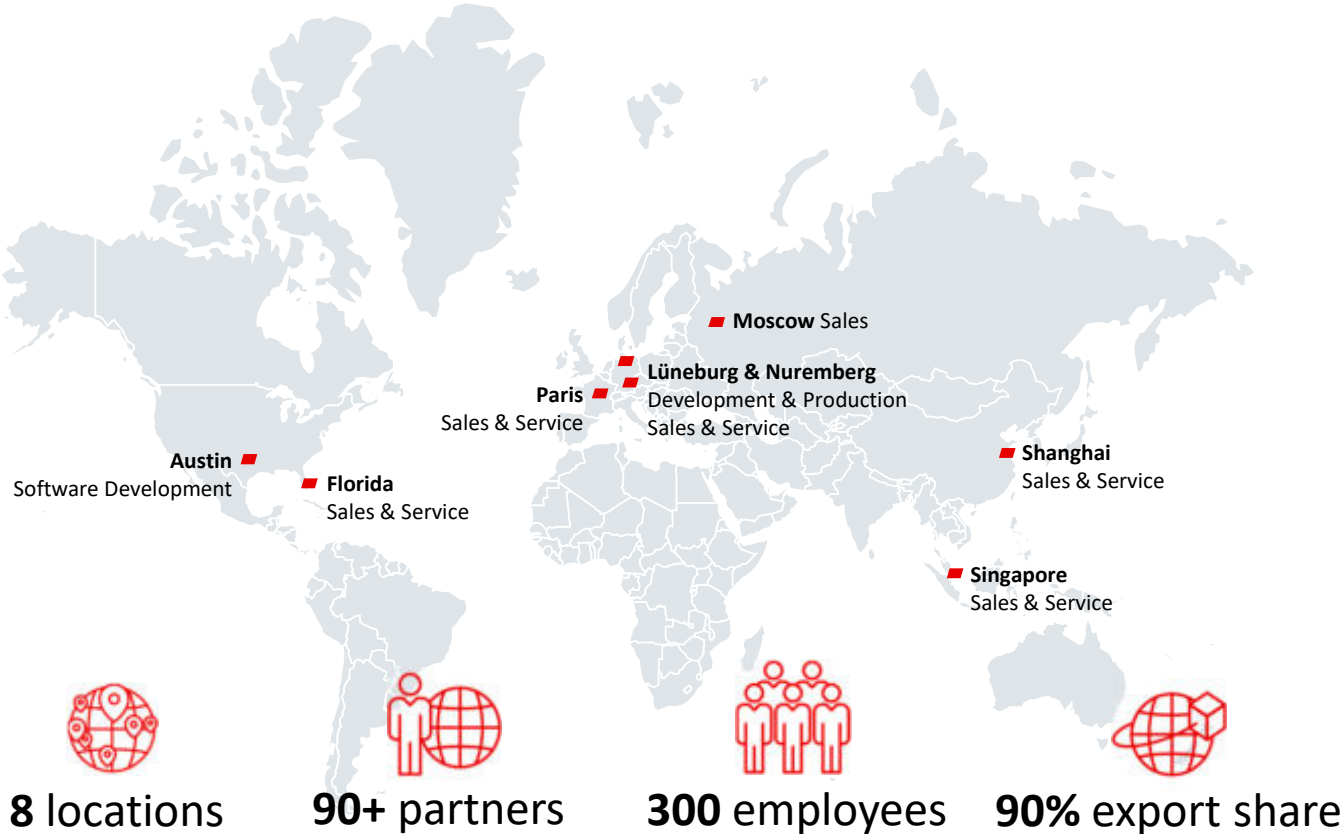


Challenges in precast element production

- Sourcing qualified staff
 - Market
 - Cost pressure
 - Quality requirements
 - Documentation
-
- → Pressure to speed up
 - → Pressure to increase efficiency
 - → Simplify production processes



Who and where we are



PRO-SOFT

The right software to match your needs

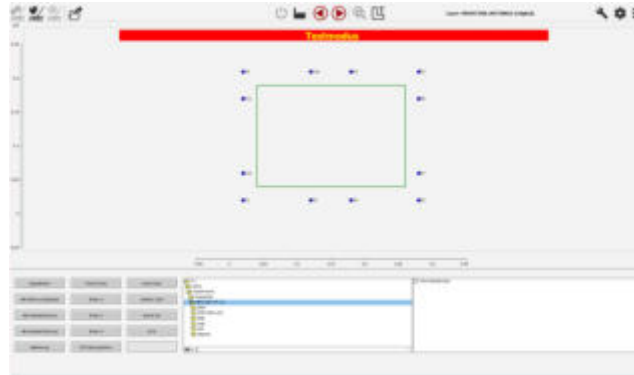


PRO-SOFT UT

Supported file formats:

- Unitechnik 4.0 – 7.0
- UXML

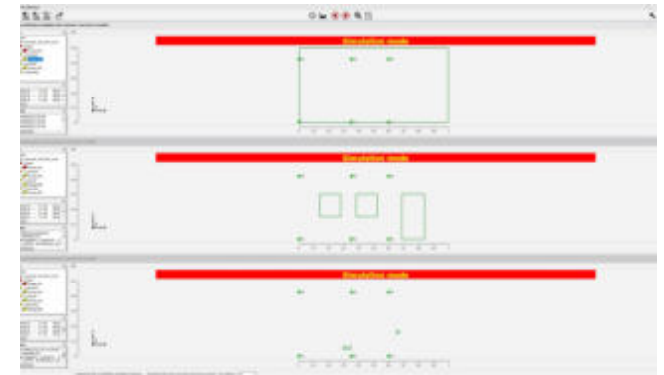
Compatibility with all major master computer systems:
Unitechnik, RIB SAA, Progress, ...



PRO-SOFT TP

Supported file formats:

- DXF
- HPGL
- further Plot- or file formats upon request



PRO-SOFT MT

Supported file formats:

- DXF
- HPGL
- Unitechnik / UXML
- further formats on request

CAD-PRO laser projection systems by LAP

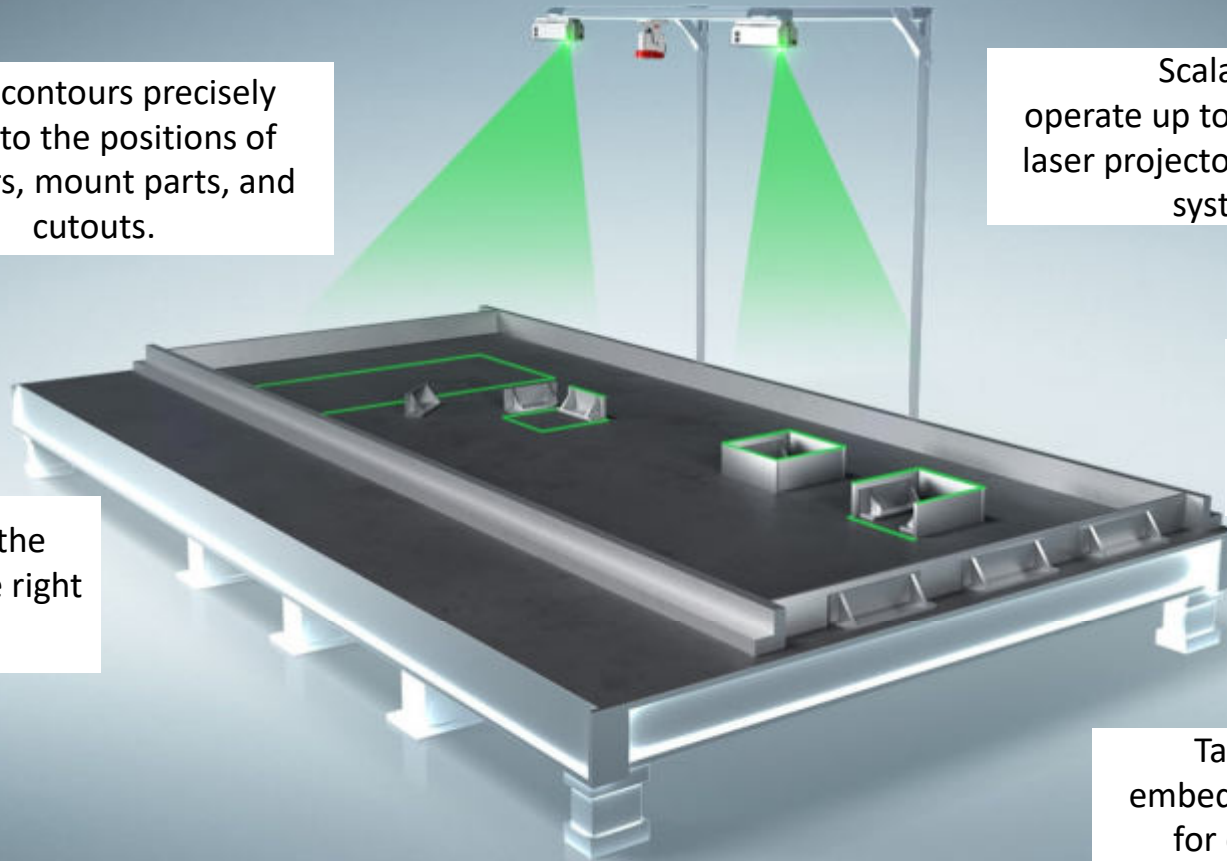
Laser contours precisely point to the positions of shutters, mount parts, and cutouts.

Scalable:
operate up to 16 CAD- PRO
laser projectors within one
system

Placement of parts within
projected contours

Place all elements in the
correct order and in the right
place.

Take pictures with
embedded projection data
for quality assurance
purposes



Groothuisbouw, NL



WATCH ON
YOUTUBE
www.youtube.com/@laplaser

All production types

- Carousel plants
- Fixed/tilting tables or decks
- Double walls
- Ceiling elements
- Massive and sandwich walls
- Special parts
 - Support beams, stairs, balconies
 - ...and more...



Benefits and Options

- Project outlines and contours, symbols
- Remote control workflows
- No PC-access required*
- Compatible with all precast element types
- NEW: camera pictures with embed projection

*depending on production type and process



Benefits and Options

- → Speed up production
- check

- → Increase efficiency
- check

- → Simplify production processes
- check

- → Increase precision / quality



DTEC-PRO

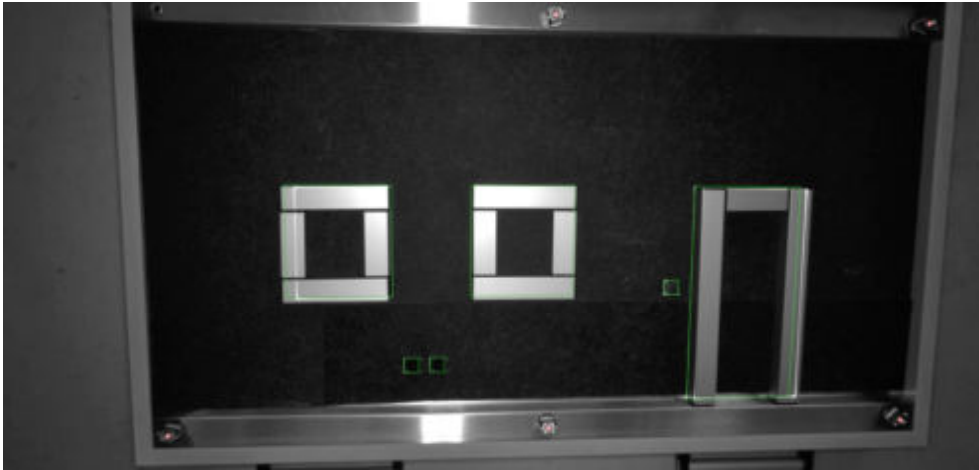
Quality assurance at the touch of a button



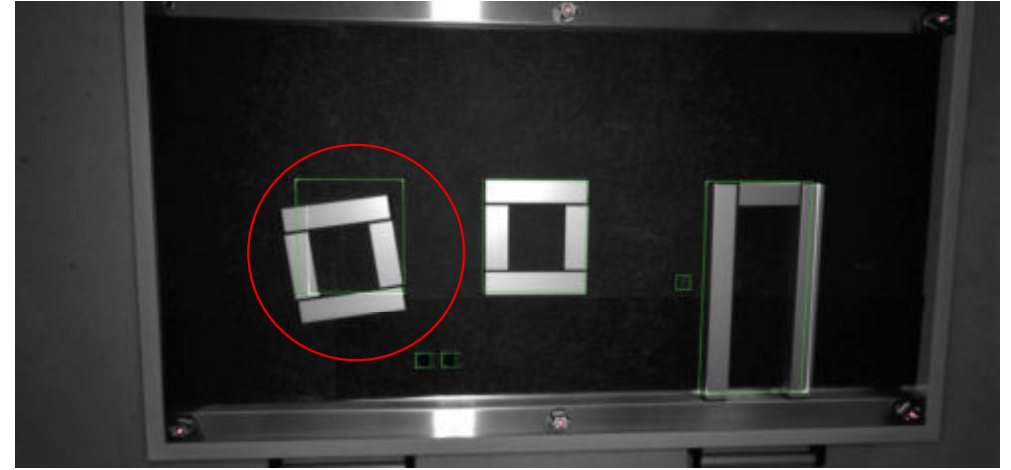
- High-contrast black & white pictures
- Projected contours embedded
- Trigger pictures by remote control
- Data base link available for saving of pictures

DTEC-PRO

Setup control by camera



■ Control form setup prior to pouring the concrete



■ Identify errors

Benefits and Options

- → Speed up production
- check

- → Increase efficiency
- check

- → Simplify production processes
- check

- → Increase precision / quality
- **NEW:** documented





**Thank you very much
for your attention!**

MORE INFO HERE:

<https://www.lap-laser.com/industry/concrete>



Boost quality and reduce cost with laser projection systems / Max Mandt-Merck

Max Mandt-Merck

Sales Manager

T +49 4131 9511 95

M +49 173 6273595

E m.mandt-merck@lap-laser.com

www.lap-laser.com

LAP GmbH Laser Applikationen

Zeppelinstr. 23

21337 Lüneburg, Germany

This presentation including the material contained therein is subject to copyright protection. It may not - even in part - be duplicated, transferred, distributed, or otherwise made publicly accessible without the prior consent of LAP GMBH LASER APPLIKATIONEN.